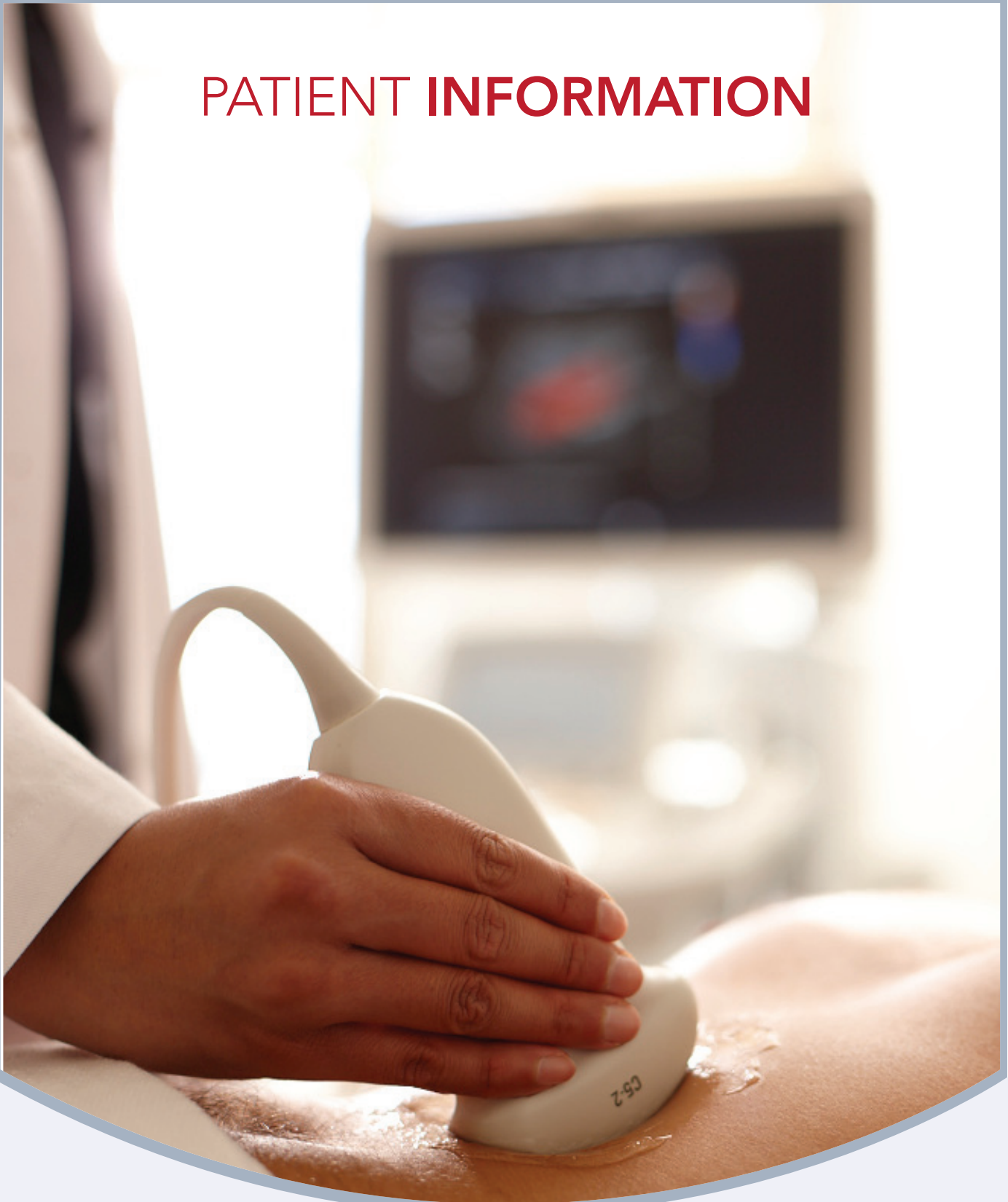




VASCULAR
ASSOCIATES
CAMPERDOWN

PATIENT INFORMATION





WHAT IS VASCULAR ULTRASOUND?

Ultrasound is a non-invasive test that helps your doctor diagnose and treat your medical problem. By using very high frequency sound waves the ultrasound machine can form images for the inside of your body. For vascular ultrasound this involves creating images of the blood vessels within your body.

WHAT HAPPENS DURING MY VISIT TO CAMPERDOWN VASCULAR LABORATORY?

When you arrive at Camperdown Vascular Laboratory you will need to check in with the reception desk staff and complete some paper work. As soon as one of the accredited vascular sonographers, (this is the person who will perform the ultrasound scan) is available they will call you through to one of the ultrasound rooms.

Once inside the room the sonographer will explain to you what the scan is they are going to perform. They will ask you to remove specific items of clothing so that they can get clear access to your skin in the areas where the scan needs to be performed.

Depending on the type of scan you will be asked to lie down on the couch, sit on the side of the couch or stand next to it.

Next the sonographer will use a soft faced transducer, which is attached to the ultrasound machine, and by running it over your skin creates the ultrasound images required so that a diagnosis can be determined.

Once the scan has been completed the sonographer will help to clean off the gel and then you will be free to redress. Depending on the type of scan the sonographer may be able to give you some details of the scan however the final interpretation of the result and diagnosis will be made by your Doctor so please do not be alarmed if they cannot give you too much detail about the result.

The last thing you will need to do is to go back to the reception desk to ensure that all of the paperwork or payments are completed. Also if you have parked in our car park please remember to obtain the exit code.

WILL IT HURT?

No.

For a vascular ultrasound scan there are no injections, no needles and no chemicals or x-rays. Depending on how deep the blood vessels are the sonographer may need to press quite firmly and this can sometimes feel a bit uncomfortable but the sonographer will do their very best to keep any discomfort to a minimum. The worst part of the scan for most people is the gel and that is because it's cold.

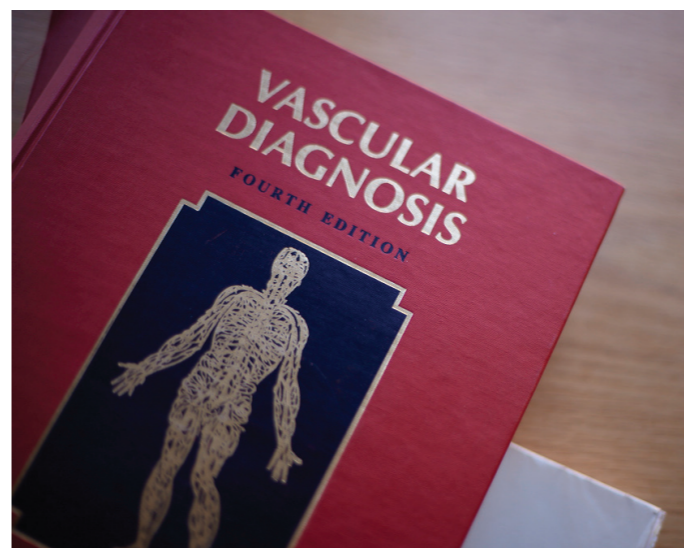
WHAT ARE THE BENEFITS VS. LIMITATIONS OF A VASCULAR ULTRASOUND EXAMINATION?

BENEFITS

- Vascular ultrasound scanning is non-invasive (no needles or injections) and is usually painless.
- Ultrasound is widely available, easy-to-use and less expensive than most other imaging methods.
- Ultrasound imaging does not use any ionizing radiation and so is readily repeatable and safe for the patient and sonographer.
- Ultrasound provides real-time imaging, making it a good tool for looking at the dynamic flow within the blood vessels.
- For diagnostic vascular ultrasound there are no known harmful effects on humans.

LIMITATIONS

- In some cases it may not always be possible to obtain images because of bowel gas or body fat. If this is the case then the sonographer will attempt to change you position to avoid these problems.



WORDS YOU MAY HEAR DURING THE SCAN:

ARTERY

This is the blood vessel that takes the blood from your heart to the various organs and muscles in your body

VEIN

This is the blood vessel that returns the blood from your organs and muscles back to your heart

PATENT

This means that the artery or vein is open and clear for the blood flow

STENOSIS

This means a narrowing within a segment of one of you blood vessels

OCCLUDED

This means there is a segment of one of your blood vessels that is completely blocked

THROMBUS

This is usually found in the veins and is where the blood has become congealed and is creating an obstruction

COLLATERAL BRANCH

This is a route that the blood is taking to avoid a blockage (occlusion) or narrowing (stenosis)

COMPETENT

This means that the vein that we are looking at is working as expected

INCOMPETENT

This means that the vein that we are looking at is no longer functioning correctly and allowing the blood to drain in the wrong direction

WHO INTERPRETS THE RESULTS AND HOW DO I GET THEM?

All the ultrasound staff at Camperdown Vascular Laboratory are accredited specialist vascular sonographers and will report on the images they take straight after the scan is finished.

The report that is produced will be signed off by one of our five vascular surgeons before it is returned to your referring Doctor. You should contact your referring Doctor in order to arrange a time to discuss the results.

02 9550 4733

For any questions please contact our staff:
Suite 11 54-60 Briggs Street Camperdown NSW 2050

02 9550 4733

For any questions please contact our staff:
Suite 11 54-60 Briggs Street Camperdown NSW 2050



If you have any further queries regarding Vascular Ultrasound we can help you, please do not hesitate contacting one of our Secretaries.

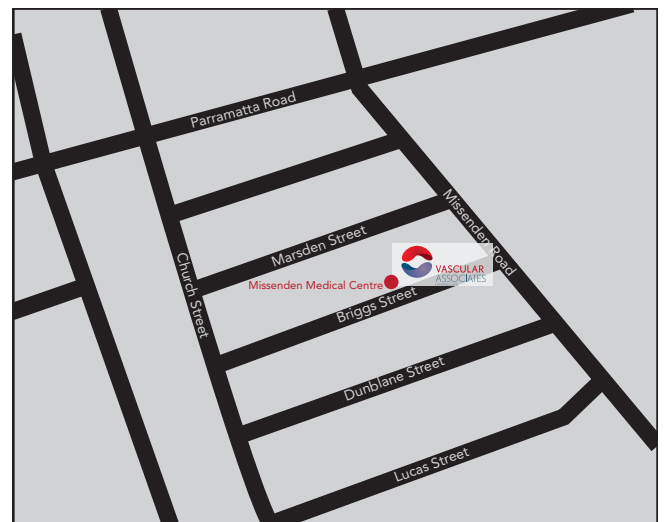
OFFICE HOURS:

Monday to Friday: 7.30am- 4.30pm

PARKING:

These are the main consulting suites for Vascular Associates Camperdown. Entrance to the car park is via Missenden Medical Centre Patient Parking off Briggs Street.

There is a lift, as well as ambulance and wheelchair access, at the entrance of this building.



VASCULAR
ASSOCIATES
CAMPERDOWN

Suite 9 | Missenden Medical Centre
54-60 Briggs Street
CAMPERDOWN NSW 2050
vascularassociates.com.au
T: 02 9550 4733 F: 02 9550 4421